

# ARBORS AT WIREGRASS

## Parcel M21 Phases 1 & 2

### COMMUNITY LANDSCAPE ARCHITECTURE

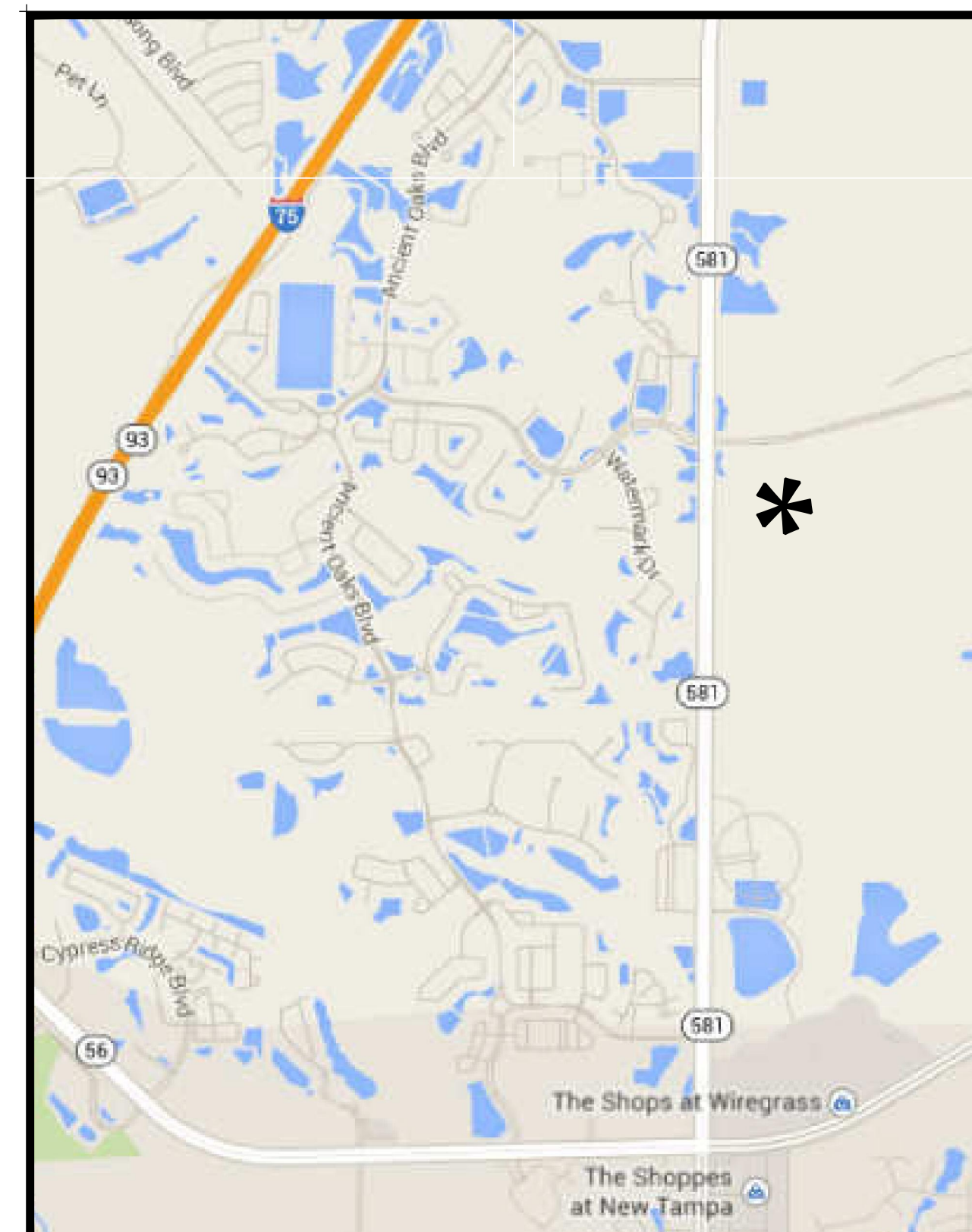
Prepared For:  
**LENNAR HOMES, LLC**  
PASCO COUNTY, FLORIDA

**DEVELOPER / OWNER:**  
**LENNAR HOMES, LLC**  
4600 West Cypress Street, Suite 200  
Tampa, FL 33607  
Contact: Mark McDonald  
phone: 813.574.5665

**PROJECT CIVIL ENGINEER:**  
**KING ENGINEERING ASSOC., INC.**  
4921 Memorial Highway, Suite 300  
Tampa, FL 33634  
Contact: Lawrence F. Kistler  
813.880.8881

**LANDSCAPE ARCHITECT:**  
**BONNETT DESIGN GROUP, LLC**  
151 Circle Drive  
Maitland, FL 32751  
Contact: Todd W. Bonnett, RLA, LEED AP, CNU-a  
phone: 407.622.1588

**STRUCTURAL ENGINEER:**  
**DANSK CONSULTING, INC.**  
1673 Lake Baldwin Lane  
Orlando, FL 32814  
Contact: Bjarne Madsen, P.E.  
phone: 407.252.4225



LOCATION MAP  
not to scale

**SHEET INDEX:**

- L100 OVERALL LAYOUT SHEET
- L101 LAYOUT PLAN
- L102 LAYOUT PLAN
  
- L201 HARDSCAPE DESIGN PLAN
- L202 HARDSCAPE DESIGN PLAN
- L203 HARDSCAPE DESIGN PLAN
- L204 STRUCTURAL DESIGN PLAN
  
- L300 OVERALL LANDSCAPE PLAN
- L301 LANDSCAPE PLAN
- L302 LANDSCAPE PLAN
- L303 LANDSCAPE PLAN
- L304 LANDSCAPE PLAN
- L305 LANDSCAPE PLAN
- L306 LANDSCAPE PLAN
- L307 LANDSCAPE PLAN
- L308 PLANTING DETAILS & NOTES
- L309 LANDSCAPE PLAN AT ENCLAVE

2014.131

October 16, 2014



**BONNETT design group, llc**  
landscape architecture . community planning  
FL # LC26000341  
151 Circle Drive . Maitland, FL 32751  
407.622.1588 voice . 407.358.5363 fax  
[www.BonnettDesignGroup.com](http://www.BonnettDesignGroup.com)



DRAWING: OTHER: 10/21/2014 10:58:56 AM  
C:\ASST\PERMITS\WIREGRASS\DESIGN\2014\131\_LEN\_WIREGRASS\_LA\_BASE.DWG

NOTE: EXERCISE STATIONS ARE ENERGI PRIME, 3 STATION PACKAGE BY PLAYWORLD. DIMENSIONS TO BE DETERMINED BY STATION. INSTALL ON MULCH. EXERCISE STATIONS EVERY 500 LF, TOTAL: 3.



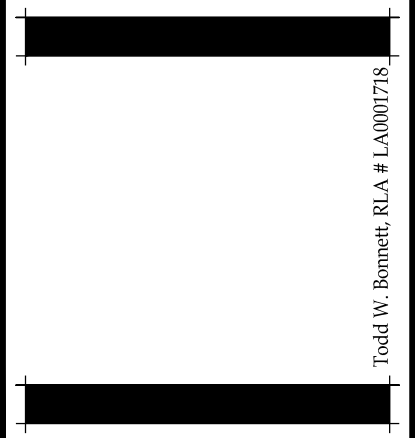
BONNETT design group, llc  
landscape architecture  
community planning  
FL LC 26000341

151 Circle Drive  
Maitland, FL 32751  
407.622.1588 voice  
407.358.5363 fax

Arbors at Wiregrass  
Landscape Architecture  
Lennar Homes, LLC  
PASCO COUNTY, FLORIDA  
OVERALL LAYOUT PLAN

DATE: October 16, 2014  
DRAWN BY: LAE/TWB  
CHECKED BY: TWB  
JOB NUMBER: 2014.131  
FILE NAME:  
2014.131\_LEN\_WIREGRASS\_LA\_BASE

REVISIONS:



L100

© 2014 BONNETT DESIGN GROUP, LLC. ALL RIGHTS RESERVED. DESIGNER HEREBY EXPRESSLY RESERVES HIS COPYRIGHT AND OTHER PROPERTY RIGHTS IN THESE PLANS. THESE PLANS AND DRAWINGS ARE NOT TO BE REPRODUCED, CHANGED OR COPIED IN ANY FORM OR MANNER WHATSOEVER WITHOUT FIRST OBTAINING THE EXPRESS WRITTEN PERMISSION AND CONSENT OF BONNETT DESIGN GROUP, LLC NOR ARE THEY TO BE ASSIGNED TO ANY PARTY WITHOUT FIRST OBTAINING SAID WRITTEN PERMISSION AND CONSENT.

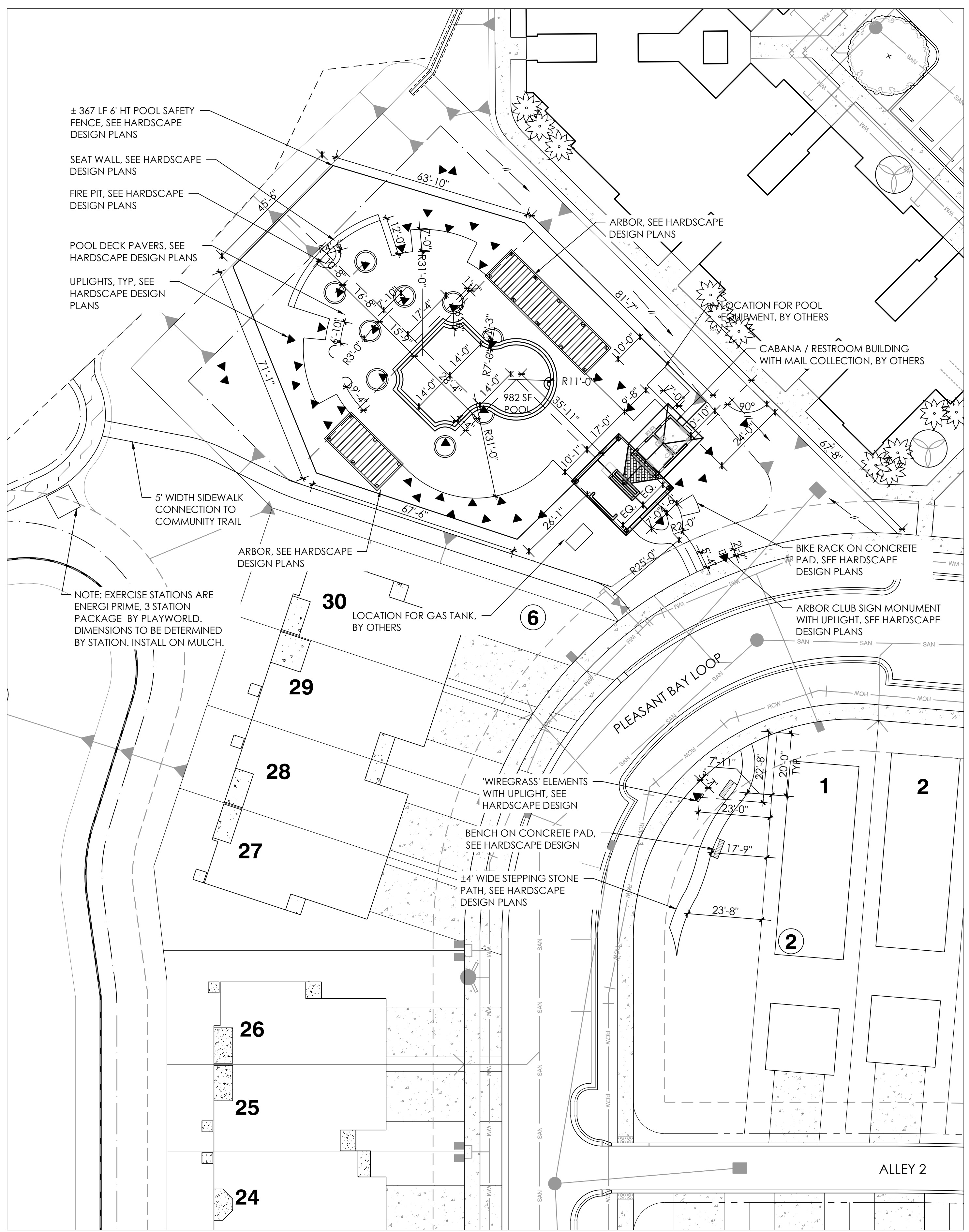
Todd W. Bonnett, RLA # LA007174



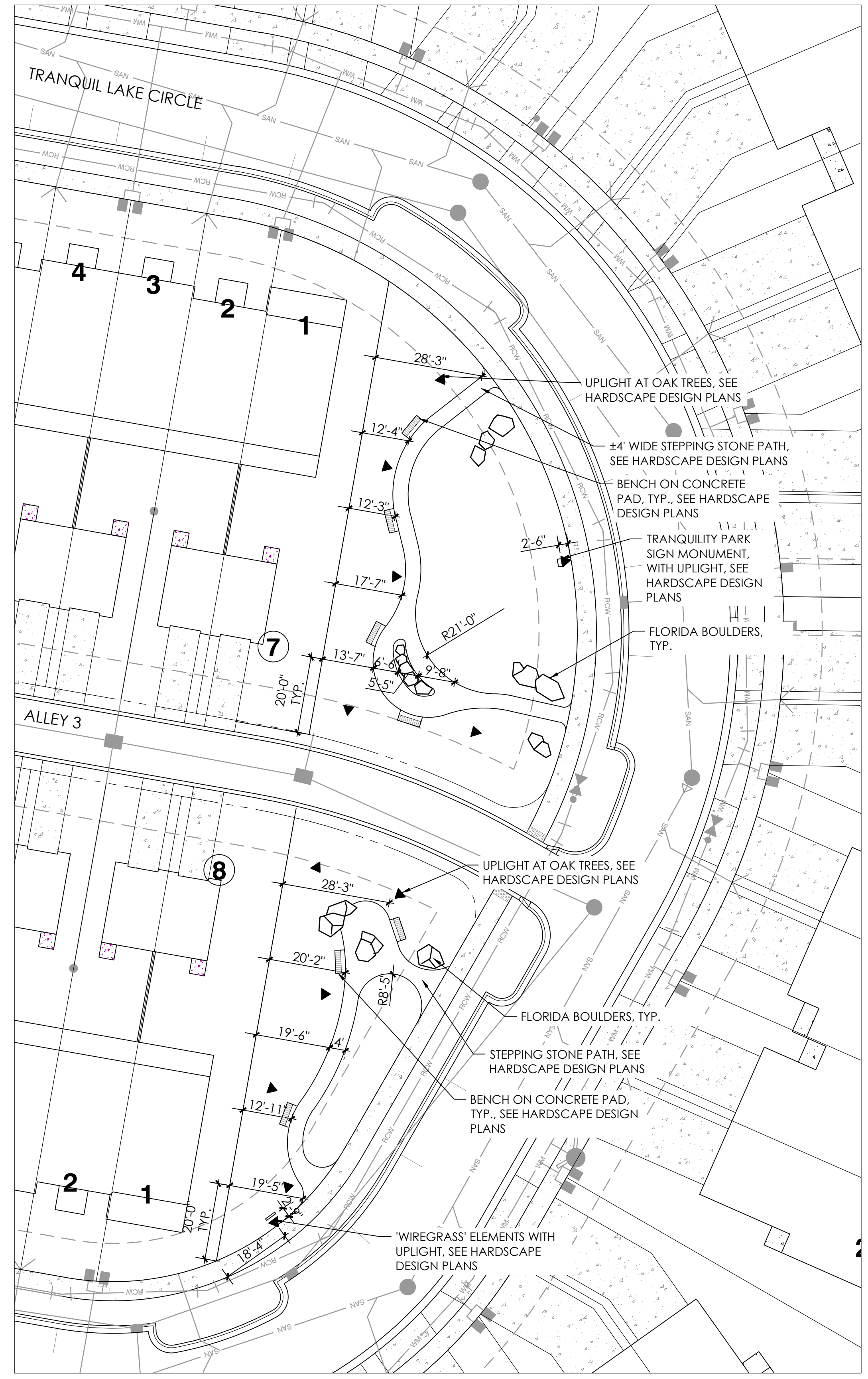




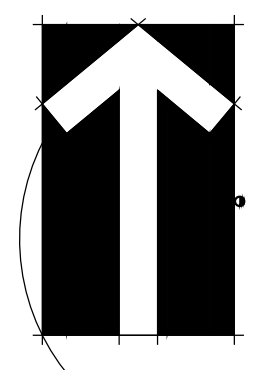
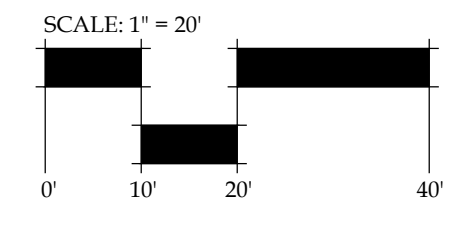
© 2014 BONNETT DESIGN GROUP, LLC. ALL RIGHTS RESERVED. DESIGNER HEREBY EXPRESSLY RESERVES HIS COPYRIGHT AND OTHER PROPERTY RIGHTS IN THESE PLANS. THESE PLANS AND DRAWINGS ARE NOT TO BE REPRODUCED, CHANGED OR COPIED IN ANY FORM OR MANNER WITHOUT THE WRITTEN PERMISSION AND CONSENT OF BONNETT DESIGN GROUP, LLC. NOR ARE THEY TO BE ASSIGNED TO ANY PARTY WITHOUT FIRST OBTAINING SAID WRITTEN PERMISSION AND CONSENT.



ARBOR CLUB AND WILDFLOWER PARK



TRANQUILITY PARK



**BONNETT design group, llc**  
 landscape architecture  
 community planning  
 FL LC 26000341  
 151 Circle Drive  
 Maitland, FL 32751  
 407.622.1588 voice  
 407.358.5363 fax

**Arbors at Wiregrass**  
**Landscape Architecture**  
**Lennar Homes, LLC**  
 PASCO COUNTY, FLORIDA  
**LAYOUT PLAN**

DATE: October 16, 2014  
 DRAWN BY: LAE/TWB  
 CHECKED BY: TWB  
 JOB NUMBER: 2014.131  
 FILE NAME:  
 2014.131\_LEN\_WIREGRASS\_LA\_BASE

REVISIONS:



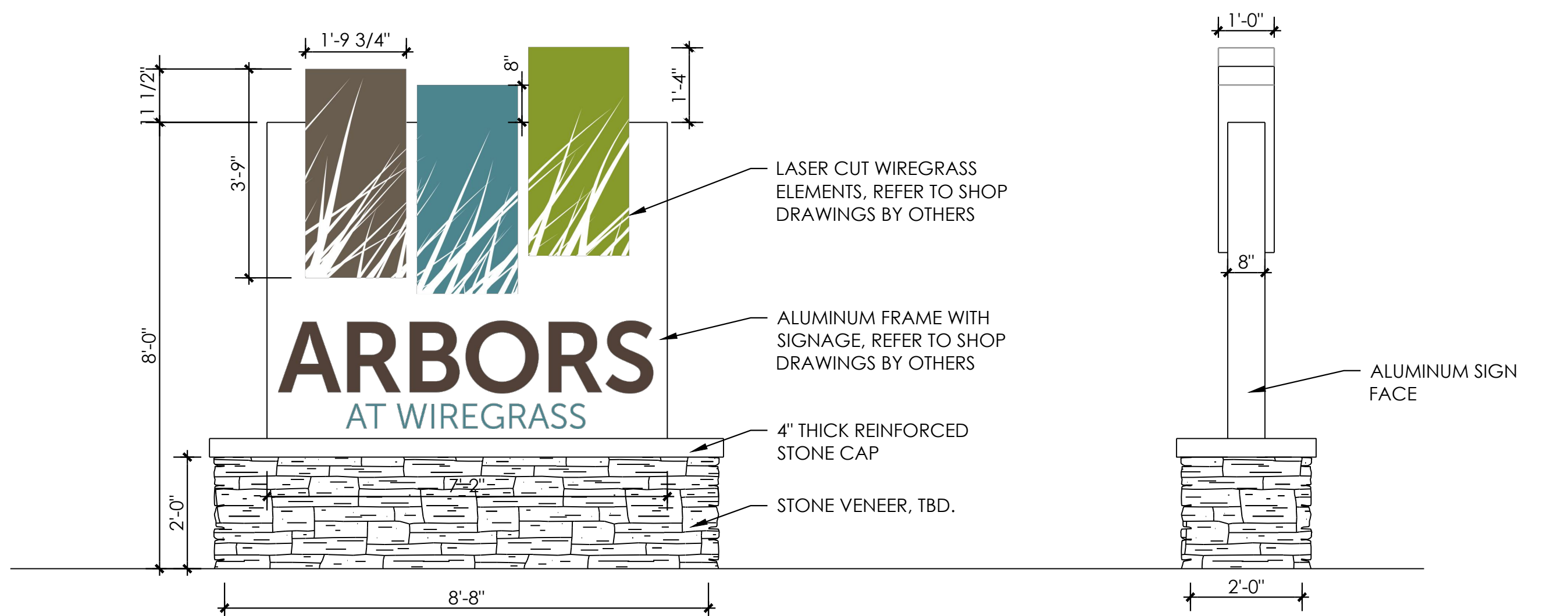


BONNETT design group, llc  
landscape architecture  
community planning  
FL LC 26000341

151 Circle Drive  
Maitland, FL 32751  
407.622.1588 voice  
407.358.5363 fax

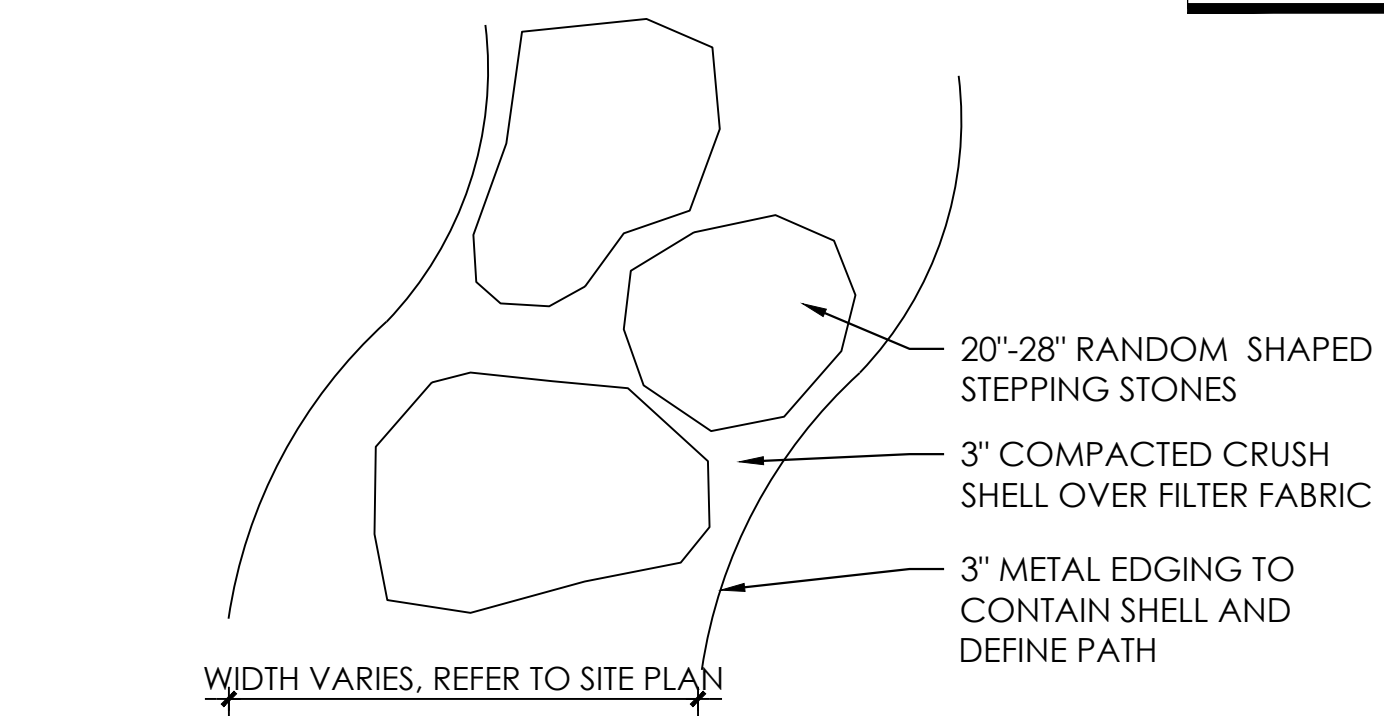
Arbors at Wiregrass  
Landscape Architecture  
Lennar Homes, LLC  
PASCO COUNTY, FLORIDA  
HARDSCAPE DESIGN PLAN

NOTE: HARDSCAPE DESIGN PLANS PROVIDED TO DEMONSTRATE DESIGN INTENT ONLY AND ARE NOT VALID FOR CONSTRUCTION WITHOUT FINAL STRUCTURAL & REINFORCEMENT DESIGN.

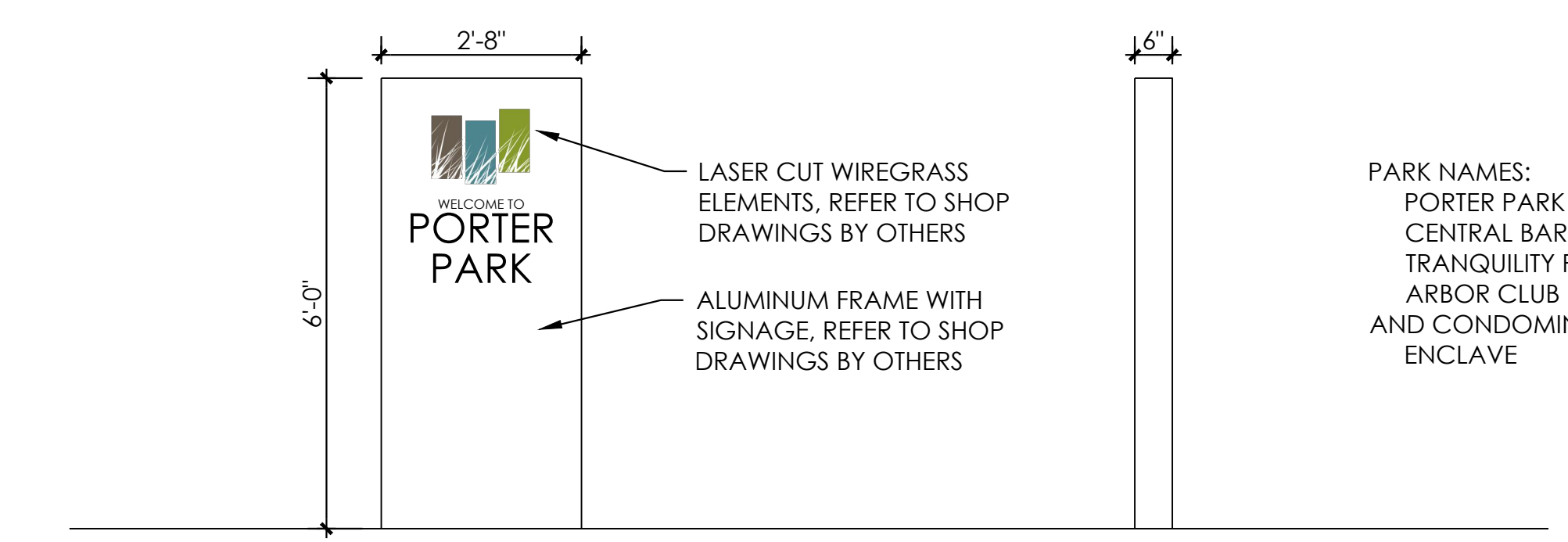


1 ENTRANCE SIGN: FRONT ELEVATION  
L201 SCALE: 1/2" = 1'-0"

2 ENTRANCE SIGN: SIDE ELEVATION  
L201 SCALE: 1/2" = 1'-0"



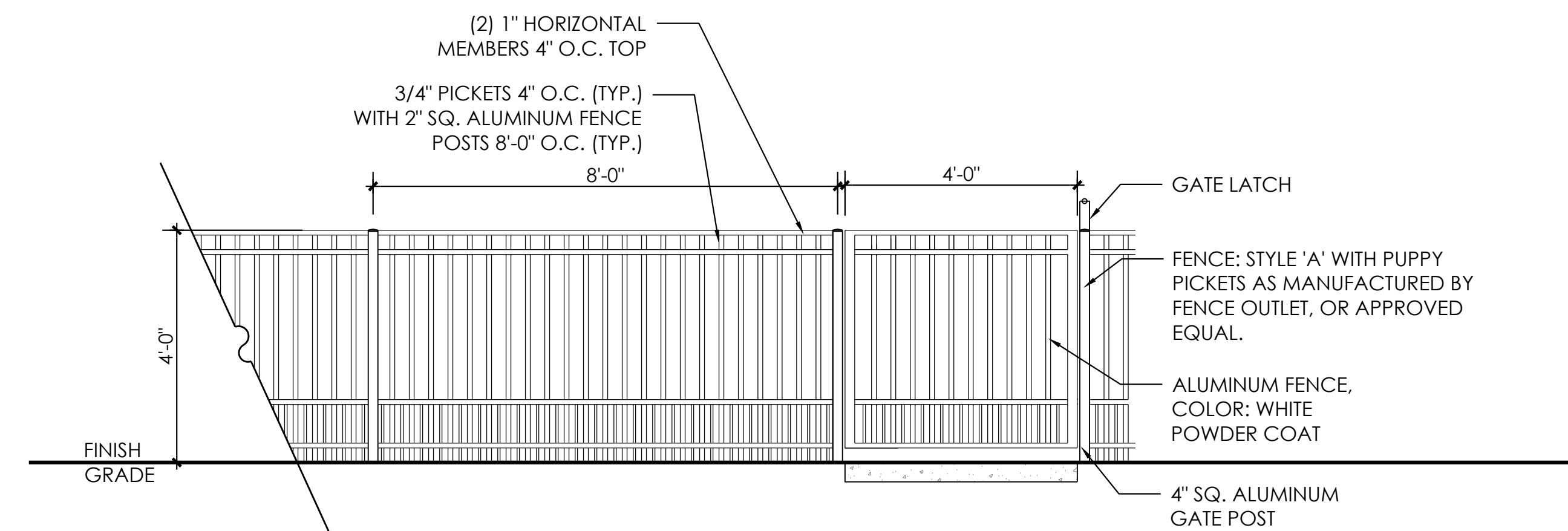
3 STONE PATH  
L201 SCALE: 1/2" = 1'-0"



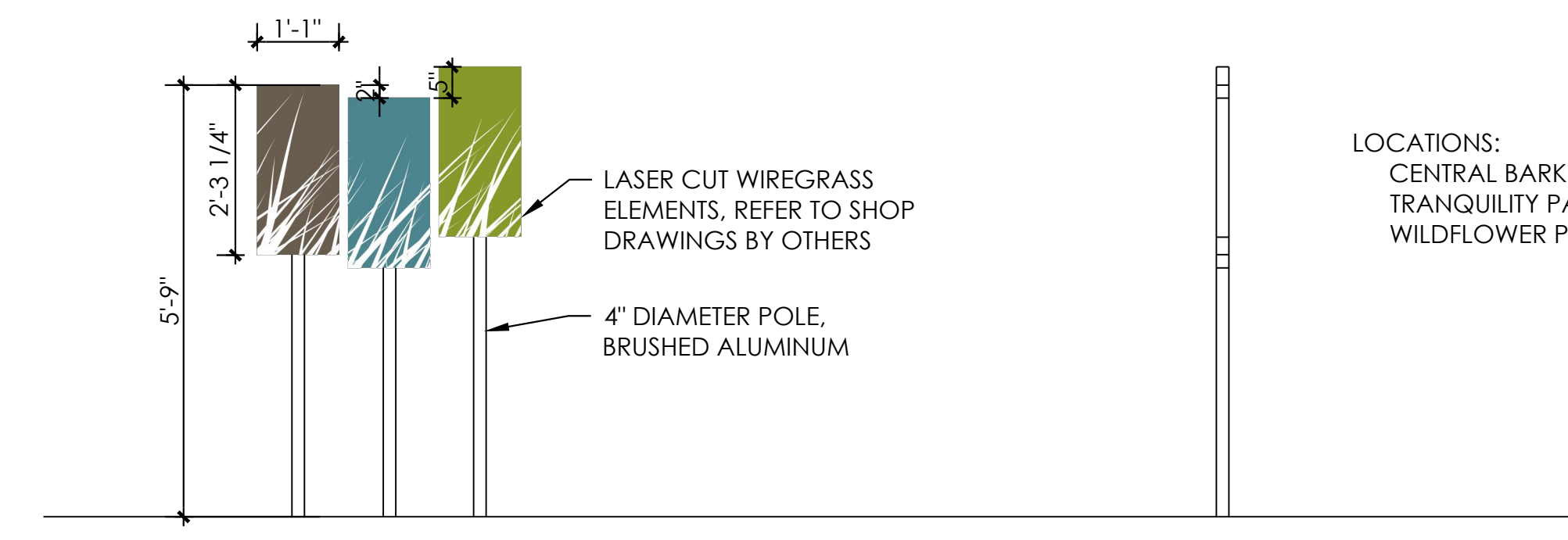
4 SIGN MONUMENT  
L201 SCALE: 1/2" = 1'-0"

5 SIDE ELEVATION  
L201 SCALE: 1/2" = 1'-0"

PARK NAMES:  
PORTER PARK  
CENTRAL BARK  
TRANQUILITY PARK  
ARBOR CLUB  
AND CONDOMINIUMS:  
ENCLAVE



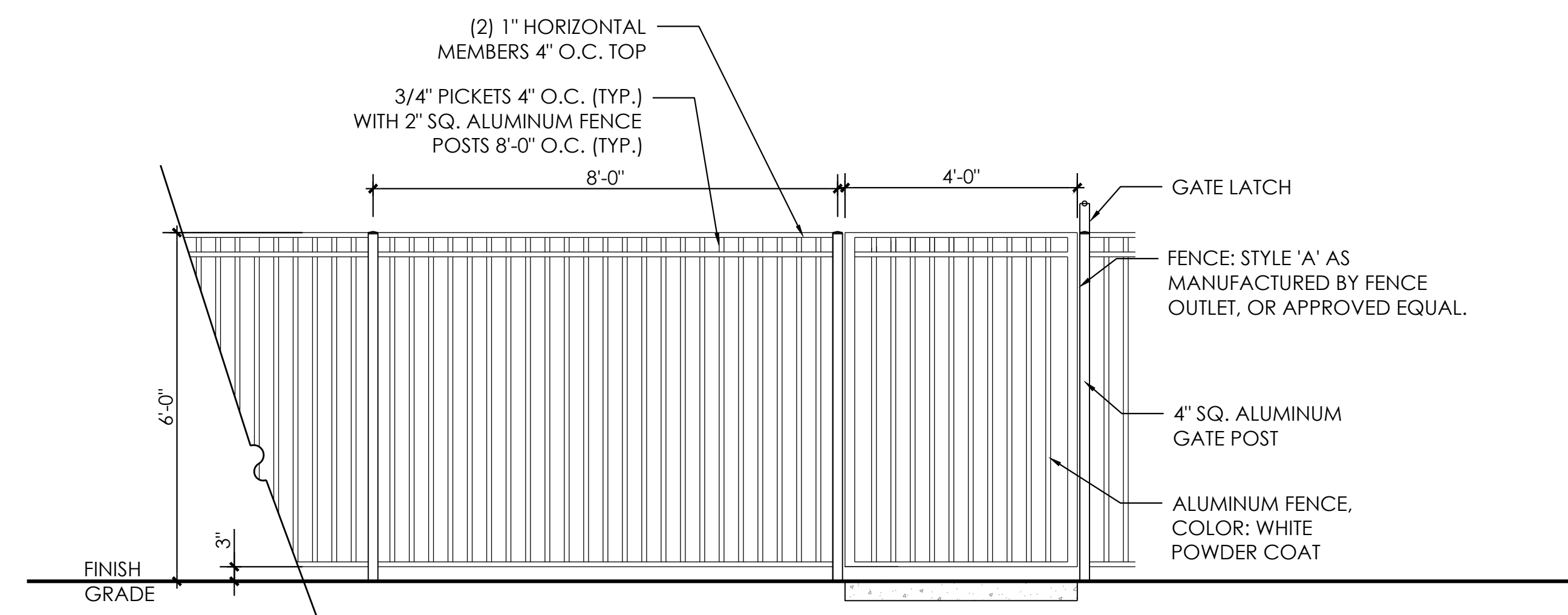
6 DOG PARK FENCE & GATE ELEVATION  
L201 SCALE: 1/2" = 1'-0"



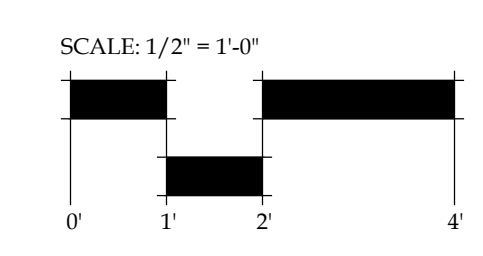
7 WIREGRASS ELEMENTS  
L201 SCALE: 1/2" = 1'-0"

8 SIDE ELEVATION  
L201 SCALE: 1/2" = 1'-0"

LOCATIONS:  
CENTRAL BARK  
TRANQUILITY PARK  
WILDFLOWER PARK



9 POOL FENCE & GATE ELEVATION  
L201 SCALE: 1/2" = 1'-0"



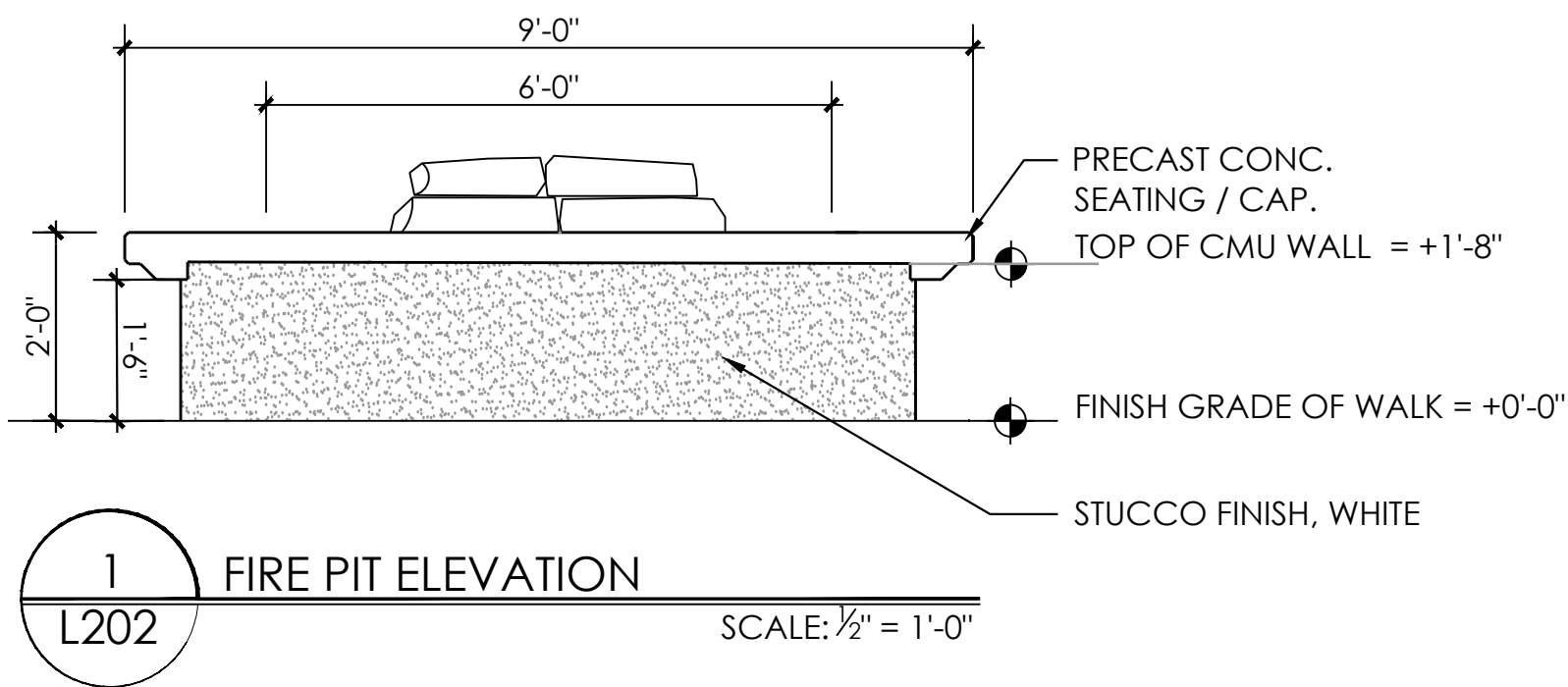
© 2014 BONNETT DESIGN GROUP, LLC. ALL RIGHTS RESERVED. DESIGNER HEREBY EXPRESSLY RESERVES HIS COPYRIGHT AND OTHER PROPERTY RIGHTS IN THESE PLANS. THESE PLANS AND DRAWINGS ARE NOT TO BE REPRODUCED, CHANGED OR COPIED IN ANY FORM OR MANNER WHATSOEVER WITHOUT FIRST OBTAINING THE EXPRESS WRITTEN PERMISSION AND CONSENT OF BONNETT DESIGN GROUP, LLC NOR ARE THEY TO BE ASSIGNED TO ANY PARTY WITHOUT FIRST OBTAINING SAID WRITTEN PERMISSION AND CONSENT.

DATE: October 16, 2014  
DRAWN BY: LAE/TWB  
CHECKED BY: TWB  
JOB NUMBER: 2014.131  
FILE NAME: 2014.131\_LEN\_WIREGRASS\_1S\_BASE

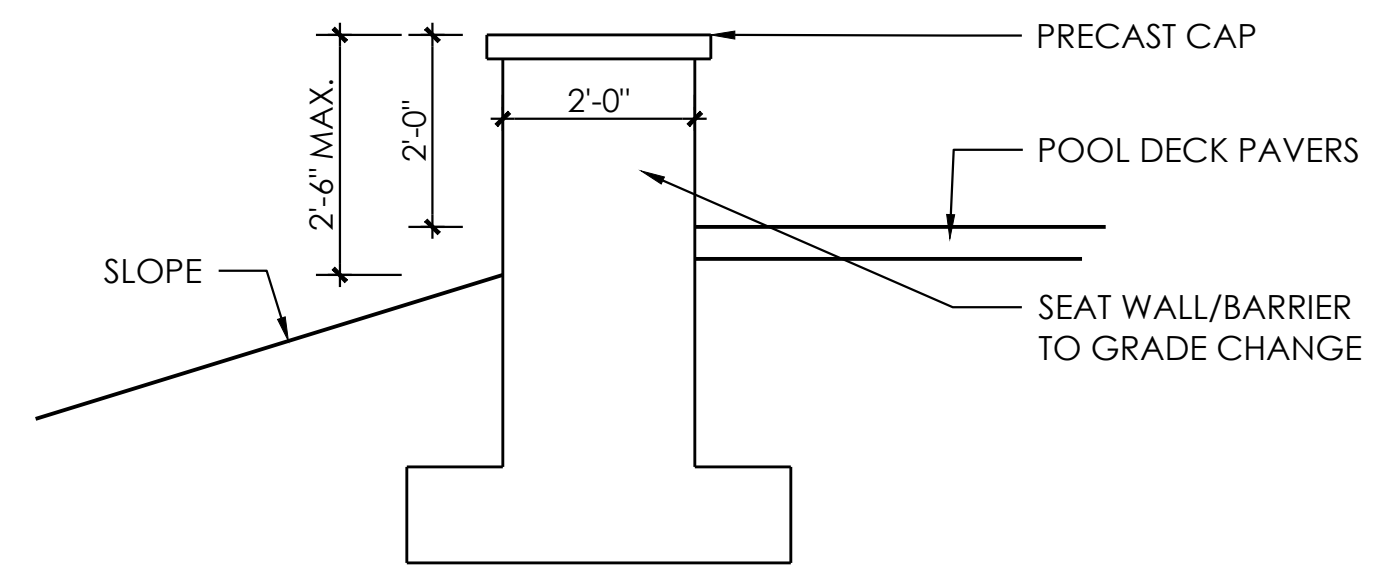
REVISIONS:

L201

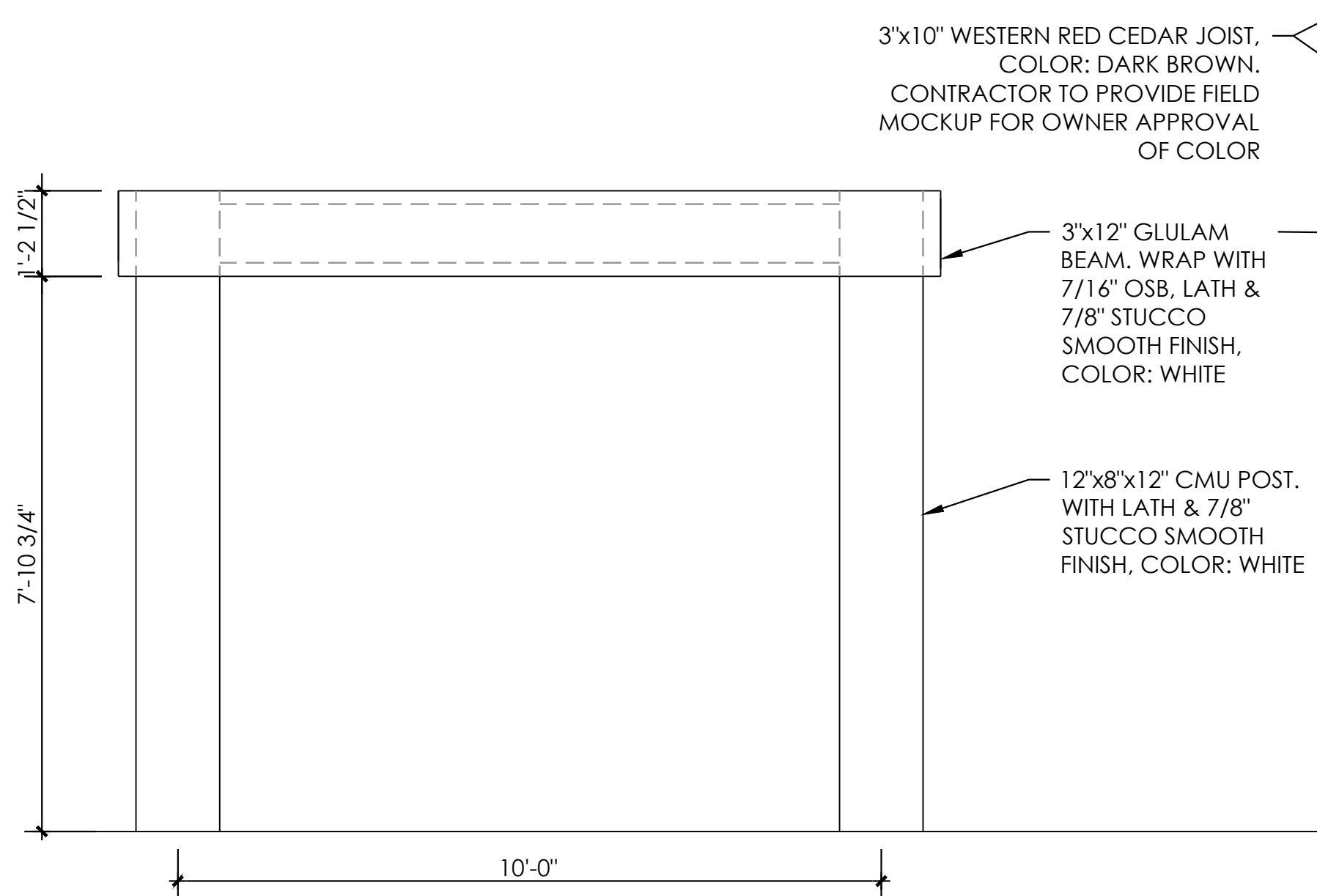
DRAWING: OTHER: 10/21/2014 10:56:25 AM  
C:\ASST\PROJECTS\WIREGRASS\DESIGN\2014\131\_LEN\_WIREGRASS\_1S\_BASE.DWG



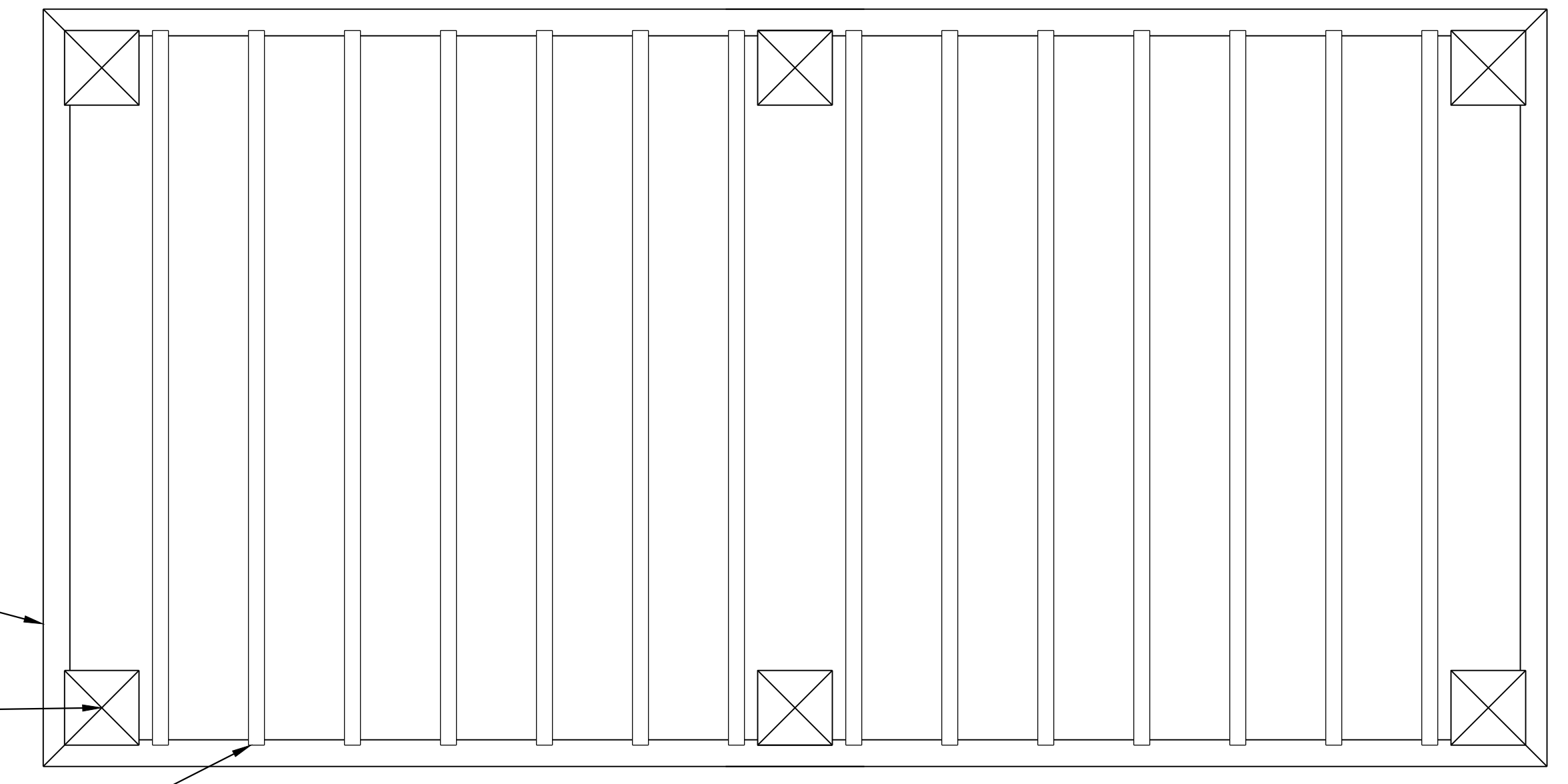
**1 FIRE PIT ELEVATION**  
L202 SCALE: 1/2" = 1'-0"



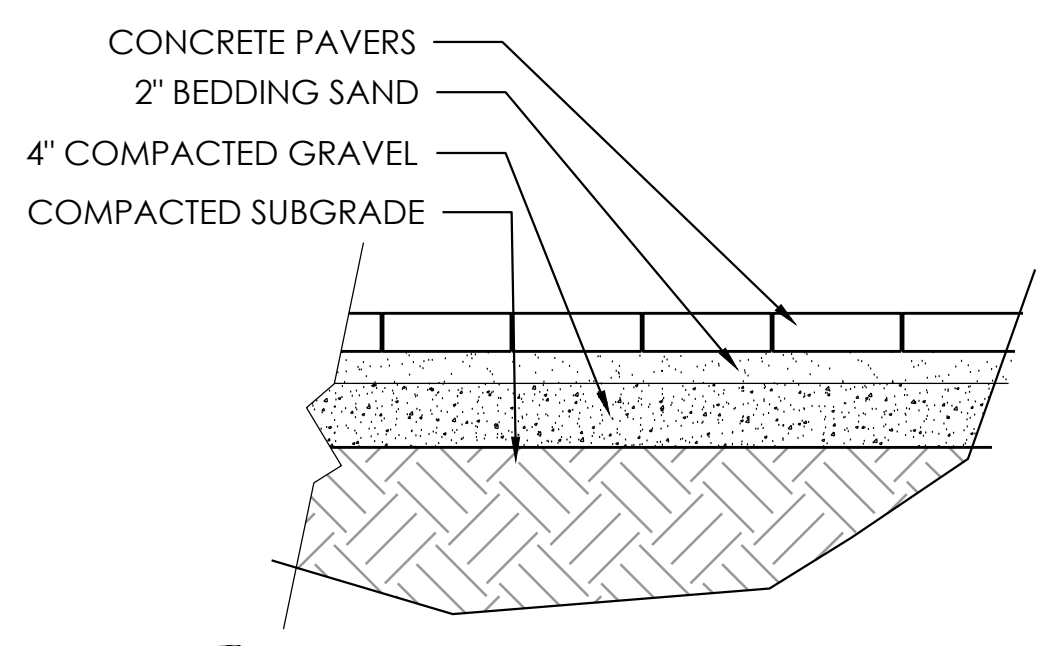
**2 SEAT WALL**  
L202 SCALE: 1/2" = 1'-0"



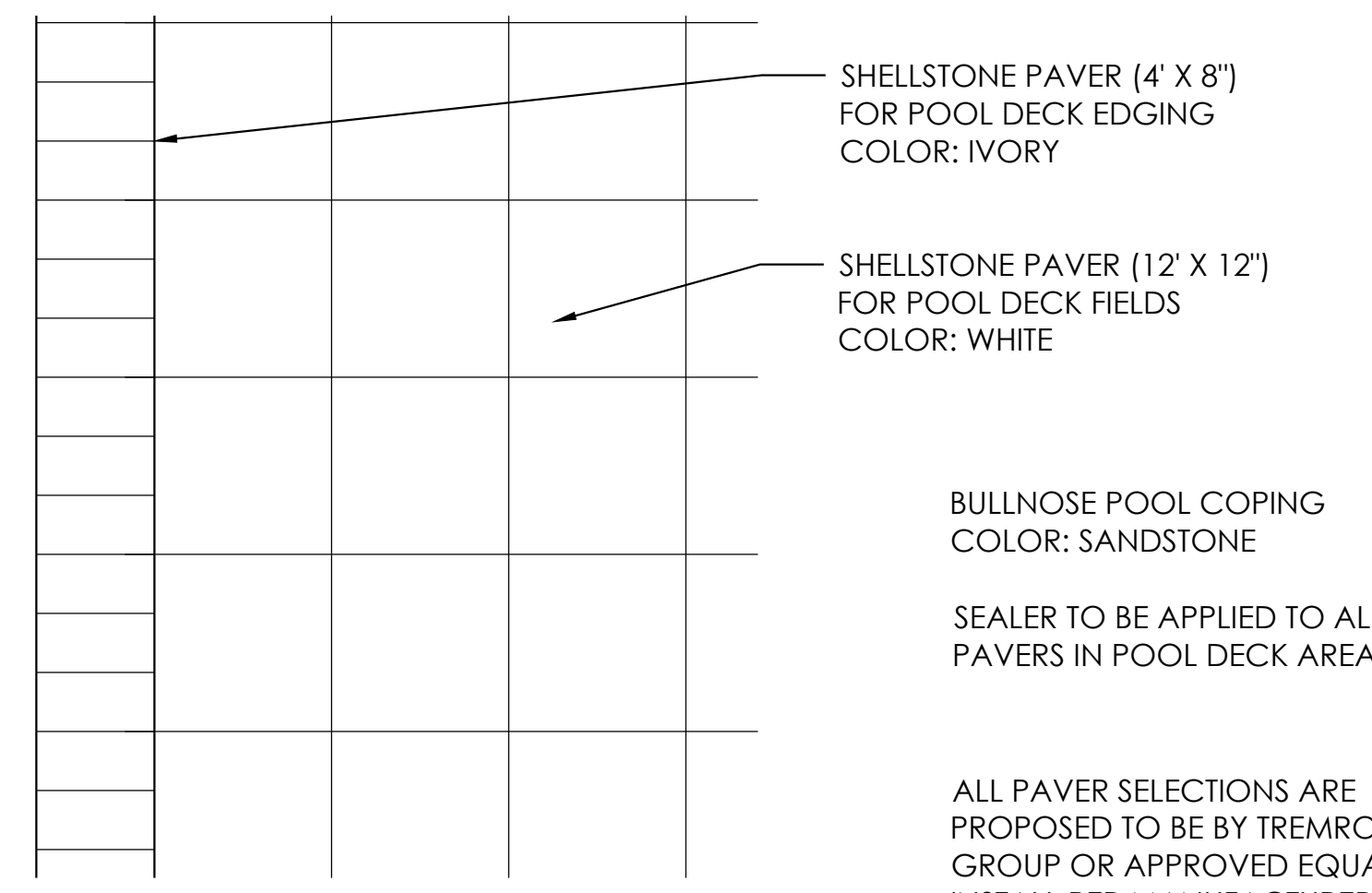
**3 ARBOR SIDE ELEVATION**  
L202 SCALE: 1/2" = 1'-0"



**4 ARBOR FRONT ELEVATION**  
L202 SCALE: 1/2" = 1'-0"



**5 PAVERS ON SAND SECTION**  
L202 SCALE: 1" = 1'-0"



**6 PAVERS LAYOUT DETAIL**  
L202 SCALE: 1" = 1'-0"

BULLNOSE POOL COPING  
COLOR: SANDSTONE

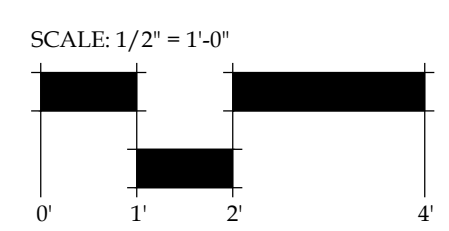
SEALER TO BE APPLIED TO ALL  
PAVERS IN POOL DECK AREAS.

ALL PAVER SELECTIONS ARE  
PROPOSED TO BE BY TREMRON  
GROUP OR APPROVED EQUAL.  
INSTALL PER MANUFACTURER'S  
RECOMMENDATIONS.

NOTE: OVERALL LENGTH VARIES,  
REFER TO LAYOUT PLANS

CONTRACTOR TO PROVIDE SHOP  
DRAWINGS OF ARBOR ELEMENTS FOR  
REVIEW AND APPROVAL PRIOR TO  
FABRICATION AND INSTALLATION.

NOTE: HARDSCAPE DESIGN PLANS  
PROVIDED TO DEMONSTRATE DESIGN INTENT  
ONLY AND ARE NOT VALID FOR  
CONSTRUCTION WITHOUT FINAL STRUCTURAL  
& REINFORCEMENT DESIGN.



**BONNETT design group, llc**  
landscape architecture  
community planning  
FL LC 26000341

151 Circle Drive  
Maitland, FL 32751  
407.622.1588 voice  
407.358.5363 fax

**Arbors at Wiregrass**  
Landscape Architecture  
Lennar Homes, LLC  
PASCO COUNTY, FLORIDA  
**HARDSCAPE DESIGN PLAN**

DATE: October 16, 2014  
DRAWN BY: LAE/TWB  
CHECKED BY: TWB  
JOB NUMBER: 2014.131  
FILE NAME:  
2014.131\_LEN\_WIREGRASS\_1S\_BASE.DWG

REVISIONS:

**L202**

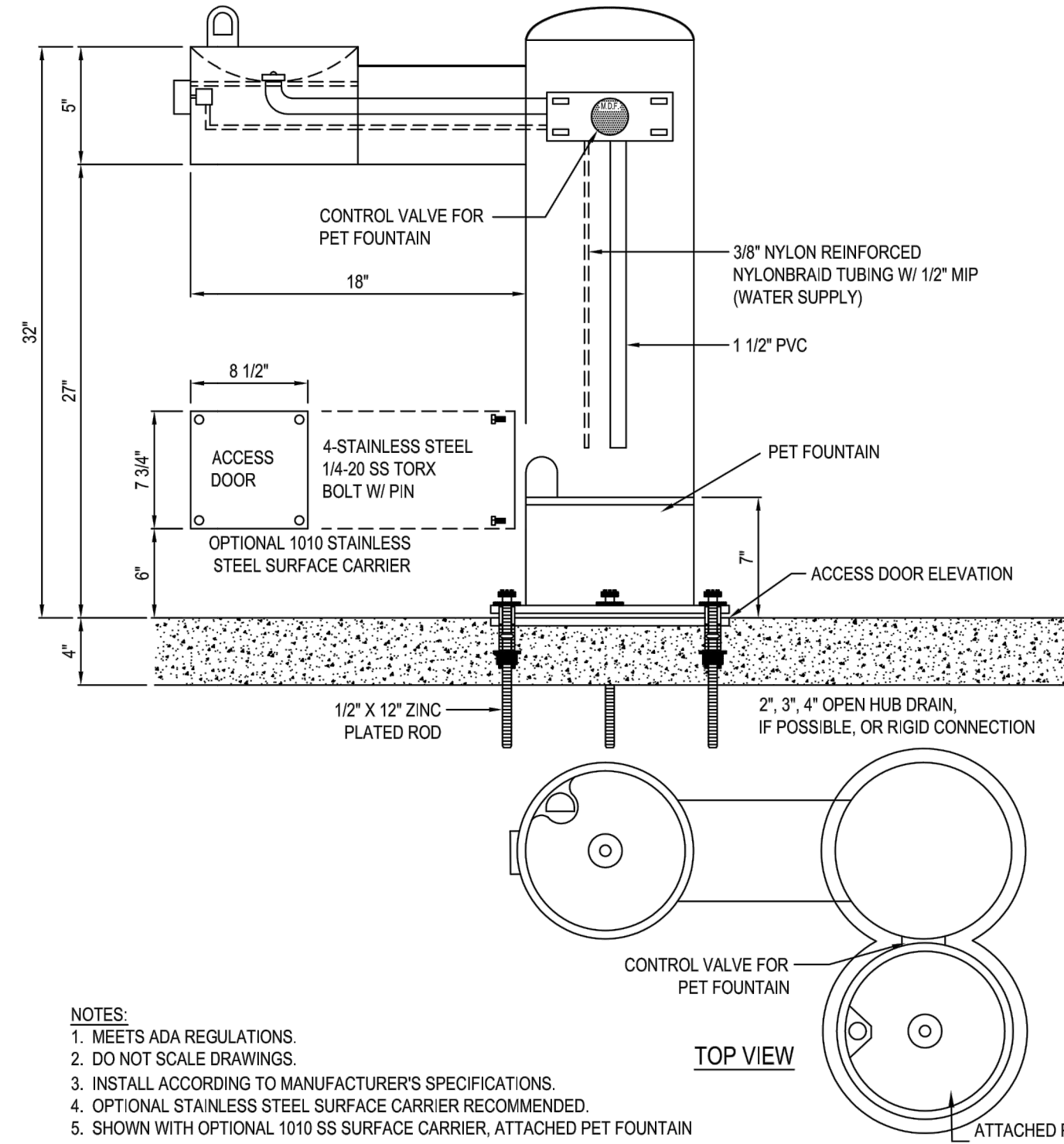
© 2014 BONNETT DESIGN GROUP, LLC. ALL RIGHTS RESERVED. DESIGNER HEREBY EXPRESSLY RESERVES HIS COPYRIGHT AND OTHER PROPERTY RIGHTS IN THESE PLANS. THESE PLANS AND DRAWINGS ARE NOT TO BE REPRODUCED, CHANGED OR COPIED IN ANY FORM OR MANNER WHATSOEVER WITHOUT FIRST OBTAINING THE EXPRESS WRITTEN PERMISSION AND CONSENT OF BONNETT DESIGN GROUP, LLC NOR ARE THEY TO BE ASSIGNED TO ANY PARTY WITHOUT FIRST OBTAINING SAID WRITTEN PERMISSION AND CONSENT.

© 2014 BONNETT DESIGN GROUP, LLC. ALL RIGHTS RESERVED. DESIGNER HEREBY EXPRESSLY RESERVES HIS COPYRIGHT AND OTHER PROPERTY RIGHTS IN THESE PLANS. THESE PLANS AND DRAWINGS ARE NOT TO BE REPRODUCED, CHANGED OR COPIED IN ANY FORM OR MANNER WHATSOEVER WITHOUT FIRST OBTAINING THE EXPRESS WRITTEN PERMISSION AND CONSENT OF BONNETT DESIGN GROUP, LLC NOR ARE THEY TO BE ASSIGNED TO ANY PARTY WITHOUT FIRST OBTAINING SAID WRITTEN PERMISSION AND CONSENT.





MOST DEPENDABLE FOUNTAINS INC.  
5705 COMMANDER DR. P.O. BOX 587  
ARLINGTON, TN 38002-0587  
TOLL FREE: 1-800-552-6331  
PHONE: (901) 867-0039  
FAX: (901) 867-0159  
www.mostdependable.com



NOTES:  
1. MEETS ADA REGULATIONS.  
2. DO NOT SCALE DRAWINGS.  
3. INSTALL ACCORDING TO MANUFACTURER'S SPECIFICATIONS.  
4. OPTIONAL STAINLESS STEEL SURFACE CARRIER RECOMMENDED.  
5. SHOWN WITH OPTIONAL 1010 SS SURFACE CARRIER, ATTACHED PET FOUNTAIN.

1 MODEL 410 SM  
L203 SHOWN W/ OPTIONAL 1010 SS SURFACE CARRIER, PF



3554-1.32 PROTECTED BY COPYRIGHT - 01/02/06

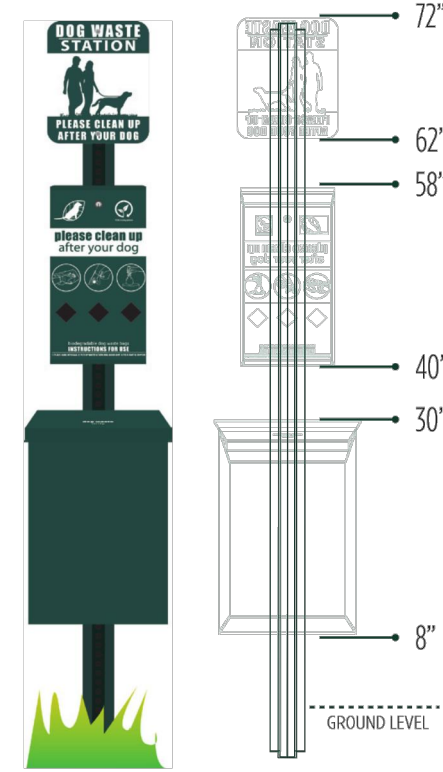
REVISION DATE 18/08/2011 www.CADdetails.com

D006 • DOG WASTE STATION

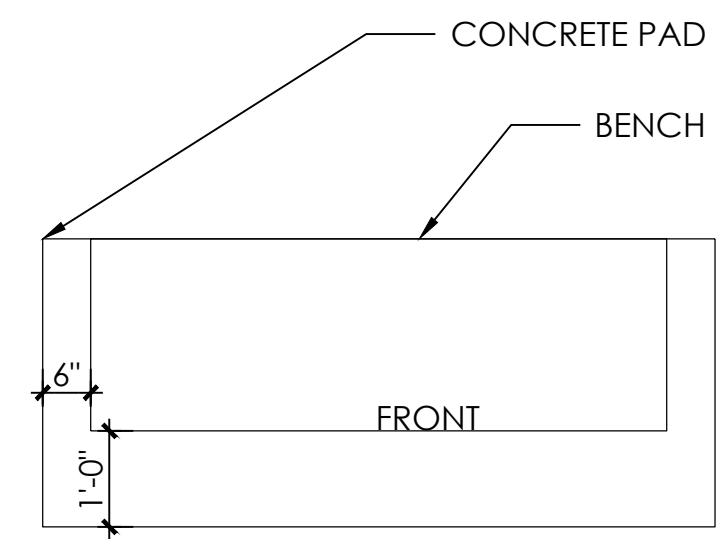
PARTS LIST:

- Can (1)
- Post (1)
- Dispenser (1)
- Sign/Sign Bracket (1)
- Dispenser Keys (2)
- 600 Waste Bags
- 50 Can Liners
- Hardware Pack

MODEL: TERRA BOUND DOG WASTE STATION AS MANUFACTURED BY TERRA BOUND, INC. (WWW.TERRABOUNDSOLUTIONS.COM) OR APPROVED EQUAL.



2 DOG WASTE STATION  
L203 NOT TO SCALE



3 CONCRETE BENCH PAD  
L203 SCALE: 1/2" = 1'-0"



LAKESIDE BACKED BENCH WITH GRASS PANEL. COLOR: TBD. AS MANUFACTURED BY LANDSCAPE FORMS (WWW.LANDSCAPEFORMS.COM)

4 BENCH  
L203 NTS



IP66

4610 KNUCKLE MOUNT  
LOW VOLTAGE LED ACCENT LIGHT

**DESCRIPTION:**  
The 4610 Knuckle Mount Accent Light is uniquely designed with rugged sealed die-cast aluminum construction and an offset pivot for balance. The 4610 is a compact fixture accepting low voltage 9 Watt LED for architectural and landscape applications to thirty feet. A wide range of photometric performances are available with external glare control.

**SPECIFICATIONS**  
**MATERIAL:** Fixture and Knuckle: Die-cast copper-free aluminum A360. All aluminum materials are chem film or anodized prior to painting.

**LED ARRAY:** 9 Watt LED  
**VOLTAGE:** 12 Volt AC or DC. Fixture must receive 11.3 Volts minimum.

**DISTRIBUTION:** SP - Spot  
MFL - Medium Flood

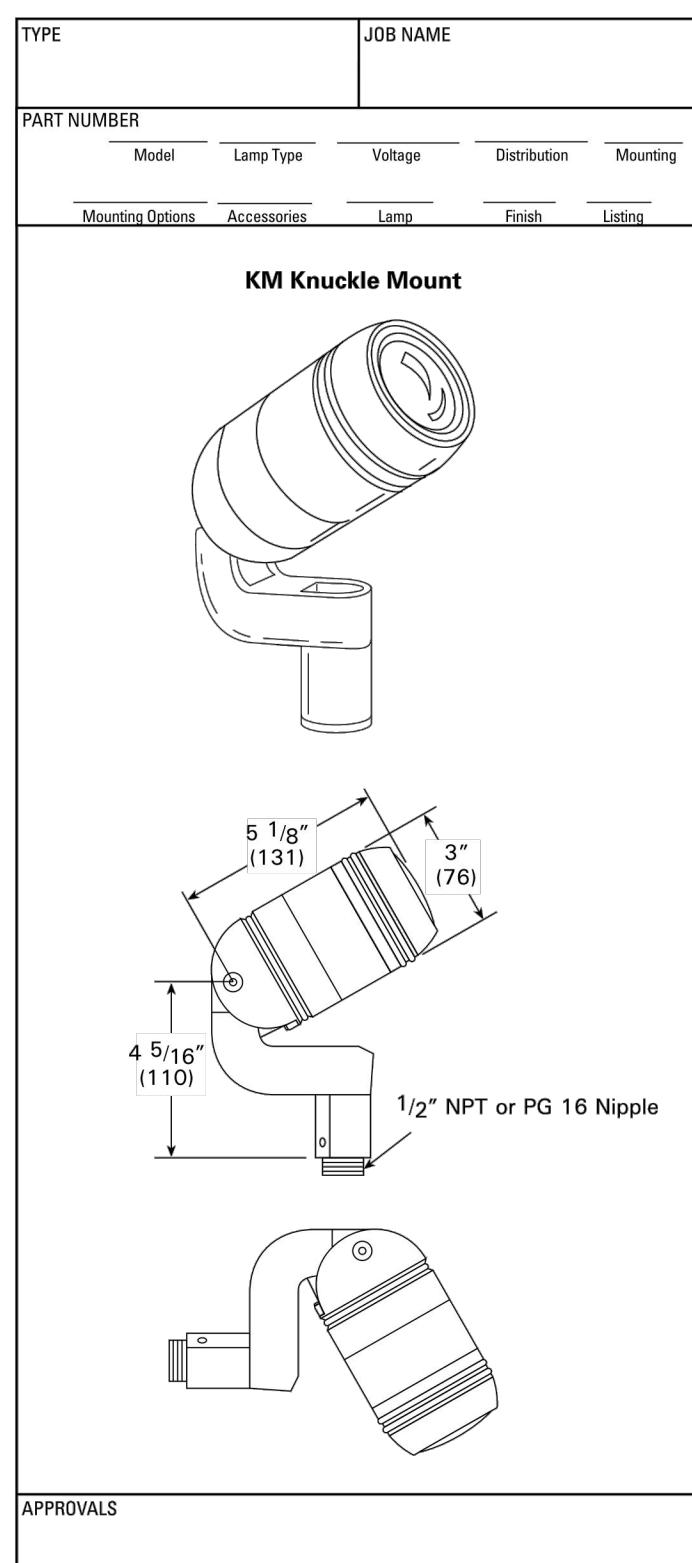
**LENS:** Crowned tempered glass.

**MOUNTING:** 1/2" NPT or PG16 adjustable knuckle.

**FINISH:** See ordering Guide for color options.

**FASTENERS:** Stainless steel.

**LISTING:** CSA, CSA



NOTE: HYREL RESERVES THE RIGHT TO MODIFY SPECIFICATION WITHOUT NOTICE. Any dimension on this sheet is to be assumed as a reference dimension. \*Used for information purposes only. It does not govern manufacturing or inspection requirements.\* (ANSI Y14.5-1975)

2090 Northoff St., Suite B  
Oxnard, CA 91321  
Phone: 805.333.9901  
Fax: 805.333.9291  
www.hyrel.com

5 L203



IP66

RHYTHM™  
LINEAR LED FLOOD

**DESCRIPTION:**  
Hyrel's Rhythm Series is a versatile and distinct LED-based range of linear floodlights, providing designers unlimited options to illuminate and enhance the architecture for interior and exterior applications. Clean, sophisticated lines blend seamlessly with architectural elements and create dramatic washes of light for spectacular effects. Luminaire designs balance day form with function while incorporating the smallest surface mountable power LED's available today. Designed to optimize thermal management, Rhythm luminaires deliver industry best lumen maintenance of 50,000 hours life at 615 mA with 70% lumen maintenance.

**SPECIFICATIONS:**  
**MATERIALS:** Extruded 6063-T4 aluminum with die cast A360 aluminum mounting. All fasteners are stainless steel.

**LENS:** High strength optical grade clear acrylic.

**MOUNTING:** Adjustable Surface Mount (ASM), Side Adjustable Surface Mount (SASM), and Knuckle Mount (KM).

**SOURCE:** Quantity six (6) Rebel™ LED's per linear foot, driven at 615 mA, with maximum power consumption of 13 watts per linear foot. Lumen Maintenance of individual LED light sources have been independently tested to IESNA LM-80 standards.

**POWER SUPPLY:** 60W power supply is provided standard with NEMA rated enclosure, and may be remotely located up to 20' (w/ 18AWG). One power supply (60 watts) required for each 4-foot length of fixture. Optional NEMA rated power supplies, rated to IP96, are available for use with the Rhythm.

**CONTROL:** Available with 0-10 volt dimming option. Dimming module mounted in SSBR surface box.

**VOLTAGE:** MVOLT (120-277V) 50/60Hz.

**OPERATING TEMPERATURE:** -40°C to 50°C

**DISTRIBUTION:** 5° Narrow Spot, 44° Medium Flood, 64° Flood, 118° Wide Flood, and 55° Wall Wash Distribution. All photometry tested to IESNA LM-79 Standards.

**FINISH:** Black anodized extruded aluminum. See order guide for accent color options. Mounting accessories and surface box are polyester powder coat.

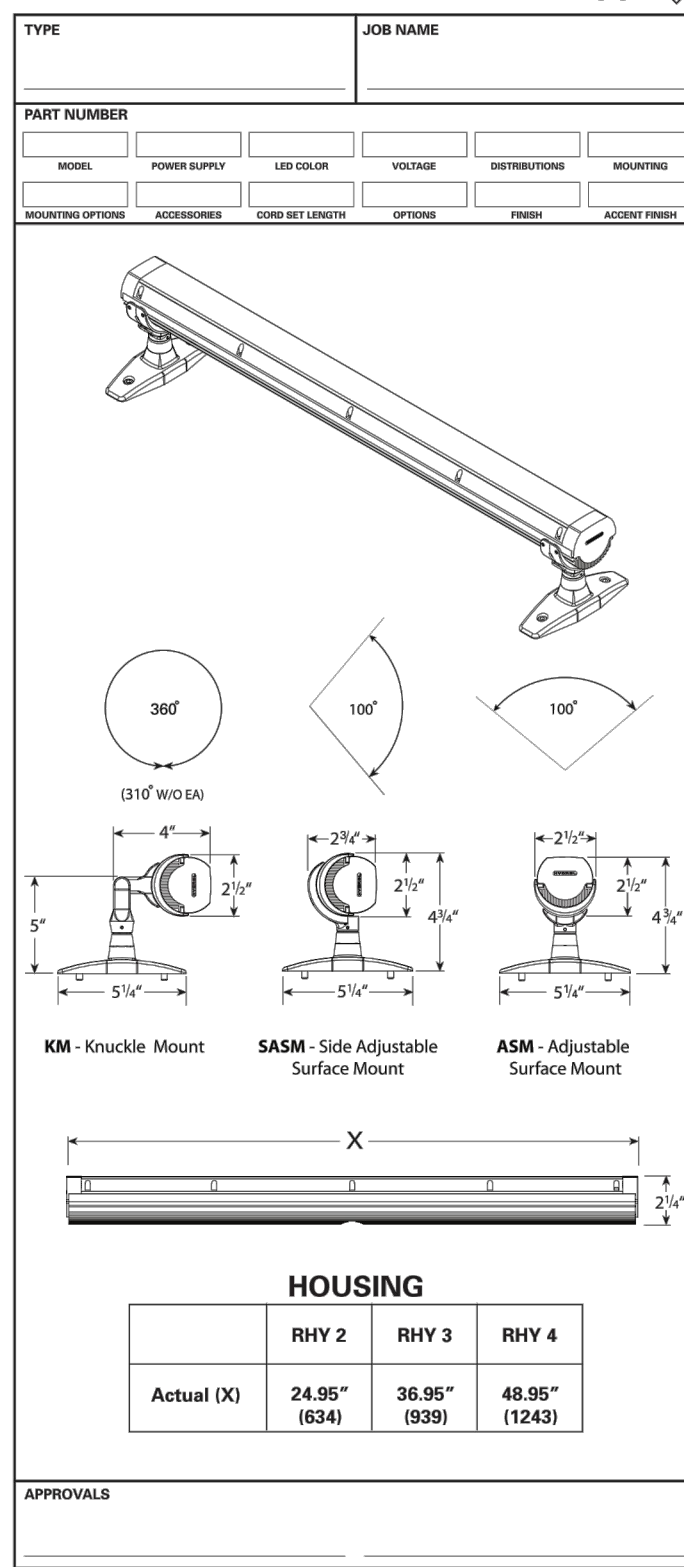
**LISTING:** CSA, CSA

**WARRANTY:** Five (5) year limited warranty. Consult factory for details

©2012 Acuity Brands Lighting, Inc.  
102112  
Rhythm

NOTE: Hyrel Reserves The Right To Modify Specification Without Notice. Any dimension on this sheet is to be assumed as a reference dimension. \*Used for information purposes only. It does not govern manufacturing or inspection requirements.\* (ANSI Y14.5-1975)

2090 Northoff St., Suite B | Oxnard, CA 91321  
Phone: 805.333.9901 | Fax: 805.333.9291  
www.hyrel.com



STYLE: LAKESIDE WITH GRASS PANEL. COLOR: TBD. AS MANUFACTURED BY LANDSCAPE FORMS, (WWW.LANDSCAPEFORMS.COM)

7 LITTER RECEPTACLE  
L203 NTS



STYLE: FLO, SURFACE MOUNT, STAINLESS STEEL FINISH. AS MANUFACTURED BY LANDSCAPE FORMS, (WWW.LANDSCAPEFORMS.COM)

8 BIKE RACK  
L203 NTS



BONNETT design group, llc  
landscape architecture  
community planning  
FL IC 26000341

151 Circle Drive  
Maitland, FL 32751  
407.622.1588 voice  
407.358.5363 fax

Arbors at Wiregrass  
Landscape Architecture  
Lennar Homes, LLC  
PASCO COUNTY, FLORIDA  
HARDSCAPE DESIGN PLAN

DATE: October 16, 2014

DRAWN BY: LAE/TWB

CHECKED BY: TWB

JOB NUMBER: 2014.131

FILE NAME: 2014.131\_LEN WIREGRASS IFS BASE

REVISIONS:

L203



STRUCTURAL NOTES

CODES AND STANDARDS

- WIND LOADS AS PER:
  - FLORIDA BUILDING CODE 2010 EDITION, FOR A 150(ULT)/116(ASD) MPH WIND SPEED, EXPOSURE C, +/-0.0 INTERNAL PRESSURE COEFFICIENT, 1.0 IMPORTANCE FACTOR, AND RISK CATEGORY II.
  - THE STRUCTURE IS DESIGNED AS OPEN. DESIGN WIND PRESSURE: 45 PSF.
- THE PROJECT WAS DESIGNED IN ACCORDANCE WITH THE:
  - FLORIDA BUILDING CODE 2010 EDITION.
  - ASCE 7-10.

FOUNDATION

- ALL SITE PREPARATION AND EXCAVATION WORK IS TO BE PERFORMED IN STRICT ACCORDANCE WITH THE:
  - RECOMMENDATIONS ON SOILS AND FOUNDATIONS INVESTIGATION PREPARED BY AN APPROVED TESTING LABORATORY PRIOR TO FOUNDATION WORK.
- THE BUILDING SITE SHOULD BE EXCAVATED TO THE DEPTH AND EXTENT INDICATED IN THE SOILS REPORT. ALL SUBGRADES SHALL BE APPROVED IN WRITING BY THE SOILS ENGINEER PRIOR TO BACKFILLING.
- BOTTOM OF FOOTINGS ASSUMED TO BEAR ON SOIL CAPABLE OF SAFELY SUPPORTING 1500 PSF.
- SOILS SUPPORTING ALL FOOTINGS MUST BE INSPECTED AND APPROVED BY A REGISTERED SOILS ENGINEER BEFORE COMMENCING WORK. APPROVAL IN WRITING MUST INDICATE THE SOIL IS ADEQUATE TO SAFELY SUSTAIN SPECIFIED SOIL BEARING PRESSURE.
- TOP OF ALL FOOTINGS SHALL BE MINIMUM 12" BELOW FINISH GRADE.
- EXCAVATION & BACKFILL:
  - ALL EXCAVATION SHALL BE KEPT DRY. EXCAVATE TO DEPTHS AND DIMENSIONS INDICATED. TAKE EVERY PRECAUTION TO GUARD AGAINST ANY MOVEMENT OR SETTLEMENT OF ADJACENT STRUCTURES, UTILITIES, PIPING, ETC.
  - PROVIDE ANY BRACING OR SHORING NECESSARY TO AVOID SETTLEMENT OR DISPLACEMENT OF EXISTING FOUNDATION OR STRUCTURES.

CONCRETE

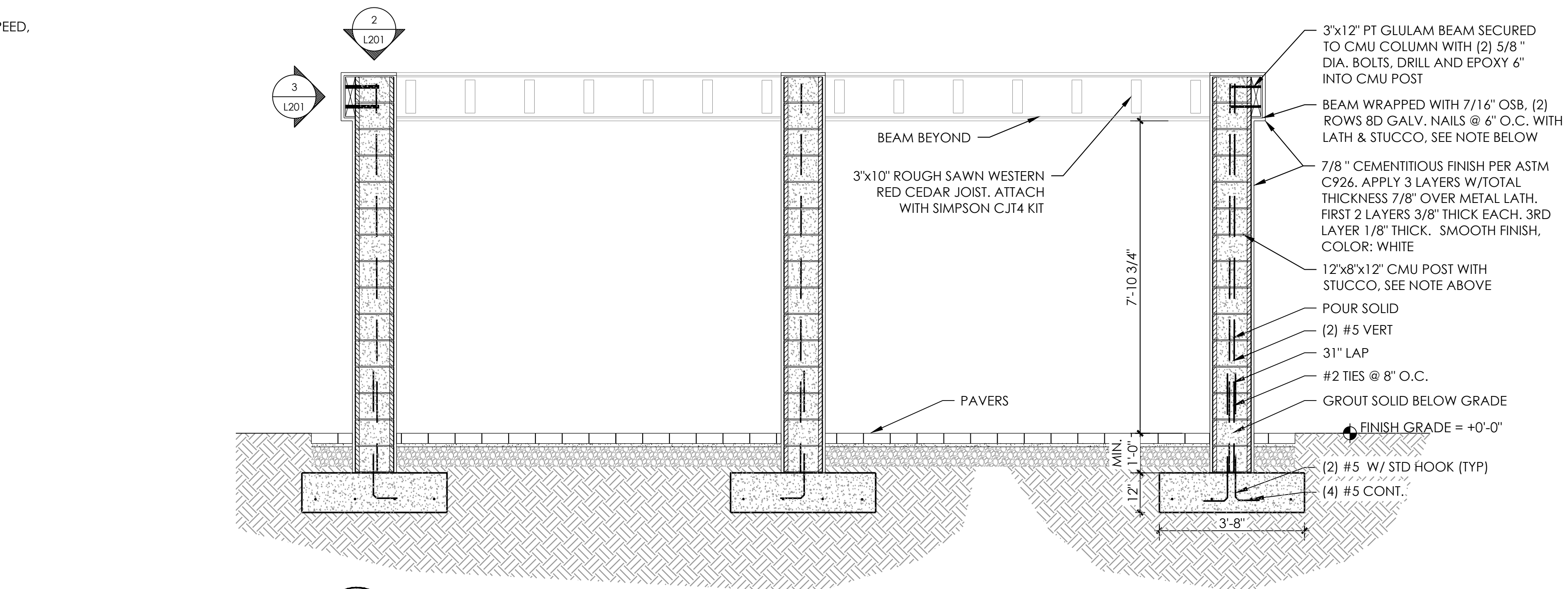
- CONCRETE ELEMENTS TO HAVE THE FOLLOWING STRENGTHS:
  - FOUNDATIONS 3000 PSI
  - MASONRY GROUT 3000 PSI
 ALL OTHER CONCRETE TO BE 3000 PSI UNLESS NOTED OTHERWISE.
- ALL CONCRETE SHALL BE READY MIX AND MEET THE FOLLOWING REQUIREMENTS:
  - A MINIMUM COMPRESSIVE STRENGTH OF 3000 PSI @ 28 DAYS.
  - SLUMPS SHALL BE 4" MINIMUM AND 6" MAXIMUM.
  - CONCRETE SHALL HAVE 3 PERCENT AIR ENTRAINMENT.
  - ALL CONCRETE TO HAVE MAXIMUM WATER/CEMENT RATIO OF 0.55.
  - JOBSITE WATER SHALL NOT BE ADDED.
- ALL CONCRETE WORK SHALL COMPLY WITH THE REQUIREMENTS OF THE ACI BUILDING CODE (ACI 318/ 2008 EDITION), THE ACI DETAILING MANUAL (ACI 315/ 1994 EDITION), AND THE SPECIFICATIONS FOR STRUCTURAL CONCRETE FOR BUILDINGS (ACI 301/ LATEST EDITION).
- SUBMIT ALL REINFORCING STEEL SHOP DRAWINGS FOR APPROVAL PRIOR TO ANY FABRICATION.
- CONCRETE COVER FOR REINFORCING STEEL SHALL BE AS REQUIRED BY ACI SPECIFICATIONS.
- REQUIREMENTS:
  - ALL REINFORCING STEEL SHALL BE MANUFACTURED FROM HIGH STRENGTH BILLET STEEL CONFORMING TO ASTM DESIGNATION A 615 GRADE 60.
- LAP ALL BARS WITH CLASS B TENSION LAP SPLICE UNLESS OTHERWISE NOTED ON DRAWINGS. LAP ALL WWF A MINIMUM OF 12 INCHES (UNLESS OTHERWISE NOTED).
- REINFORCING BARS:
  - AT CORNERS OF CONCRETE WALLS, BEAMS AND CONTINUOUS WALL FOOTINGS, PROVIDE (1-#5 OR MATCHING) HORIZONTAL BARS X 5'-0" BENT BAR FOR EACH HORIZONTAL BAR SCHEDULED AT EACH FACE.
  - ALL HOOKS SHOWN IN REINFORCEMENT SHALL BE ACI RECOMMENDED HOOKS UNLESS OTHERWISE NOTED.

MASONRY

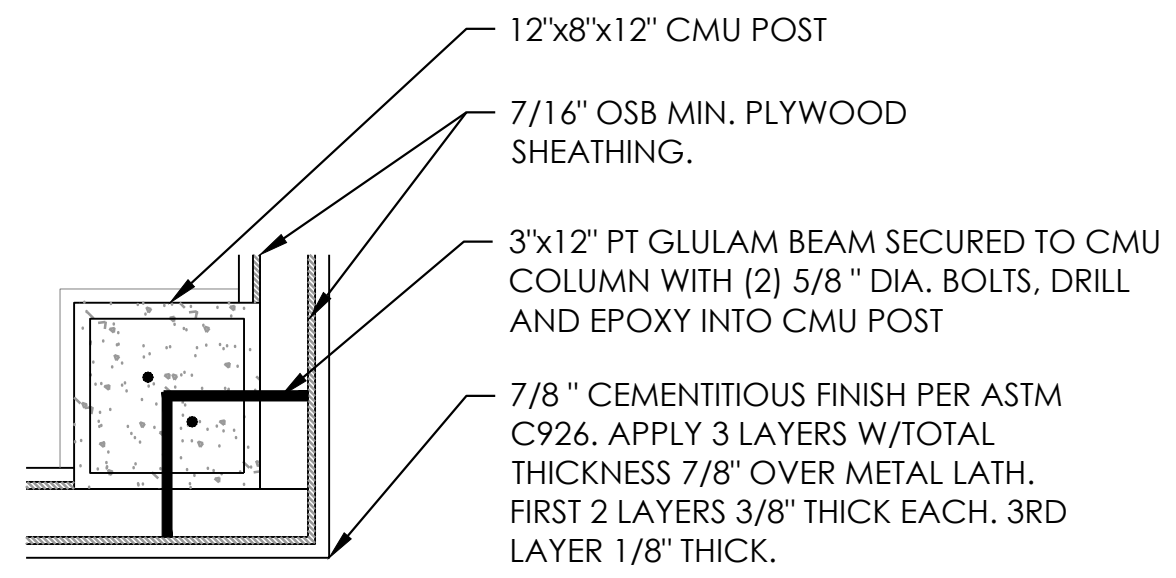
- MASONRY UNITS SHALL BE
  - LOAD BEARING ASTM C90
  - TYPE II NON-MOISTURE CONTROLLED
  - NORMAL WEIGHT
  - ALL CMU SHALL BE LAID IN A FULL BED OF MORTAR IN RUNNING BOND (U.N.O.).
- THE COMPRESSIVE STRENGTH OF MASONRY (F<sub>m</sub>) SHALL BE 1,500 PSI AS CALCULATED IN ACCORDANCE WITH ASTM C1314.
- ALL MORTAR SHALL BE IN ACCORDANCE WITH ASTM SPECIFICATION C270.
  - FROM FIELD OBTAINED TEST CUBES. (MIN. OF TWO)
- GROUT SHALL BE A HIGH SLUMP MIX
  - IN ACCORDANCE WITH ASTM SPECIFICATION C476
  - HAVING A MINIMUM COMPRESSIVE STRENGTH OF 3,000 PSI
  - FROM FIELD OBTAINED TEST CUBES. (MIN. OF TWO)
- ALL CONCRETE MASONRY BEARING AND SHEAR WALLS SHALL BE INSPECTED BY A CERTIFIED INSPECTION COMPANY AND CONSTRUCTED IN ACCORDANCE WITH THE "BUILDING CODE REQUIREMENT FOR MASONRY STRUCTURES" (ACI 530/ASCE 5/TSM 402) AND "SPECIFICATIONS FOR MASONRY STRUCTURES" (ACI 530.1/ASCE 6/TSM 602)/ 2008 EDITIONS.
- PROVIDE HOT DIPPED GALVANIZED LADDER TYPE HORIZONTAL JOINT REINFORCEMENT (9 GA.) AT 16" ON CENTER VERTICAL IN ALL MASONRY WALLS. PROVIDE DOVE TAIL SLOT ANCHORS AT CONCRETE COLUMNS.
 

FOR JOINT REINFORCEMENT, WALL TIES, ANCHORS AND INSERTS, APPLY A MINIMUM COAT OF 1.5 OUNCES PER SQUARE FOOT (PSF) (458/G/M2) COMPLY WITH THE REQUIREMENTS OF ASTM A153, CLASS B.
- EPOXY GROUT SHALL BE NON-SHRINK HIGH CREEP RESISTANT, AND SHALL HAVE THE FOLLOWING MINIMUM ALLOWABLE PROPERTIES:
  - TENSILE STRENGTH, ASTM C 30: 1,500 PSI
  - FLEXURAL STRENGTH, ASTM C 580: 4,000 PSI
  - COMPRESSIVE STRENGTH, ASTM C 579: 1,600 PSI/7 DAYS.
- MINIMUM LAP SPLICES FOR REINFORCED CMU (WITH F<sub>m</sub> = 1,500 PSI):
 

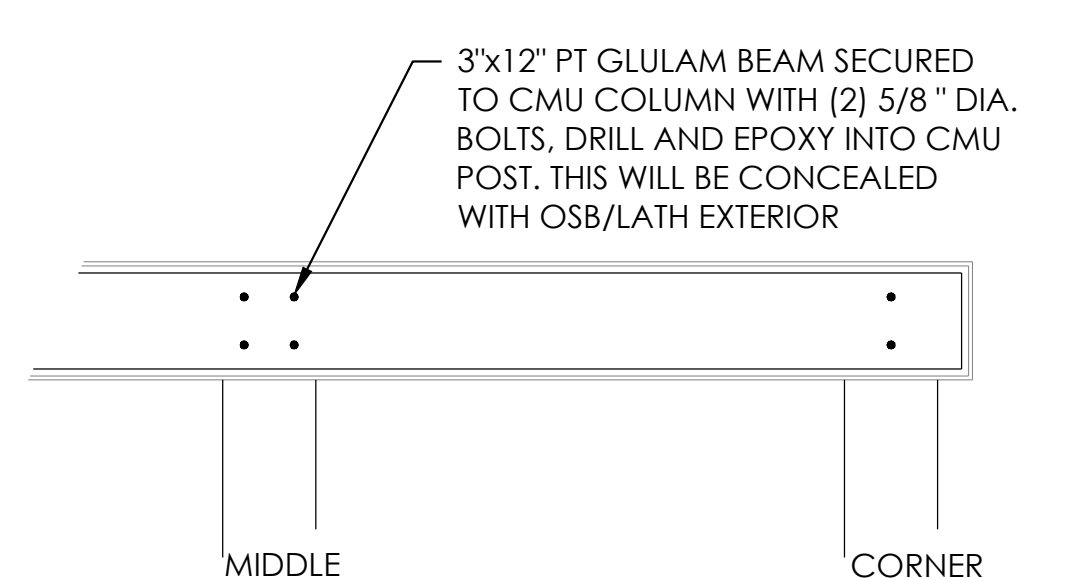
BAR SIZE			
#4	#5	#6	#7 #8
25"	31"	57"	79" 87"



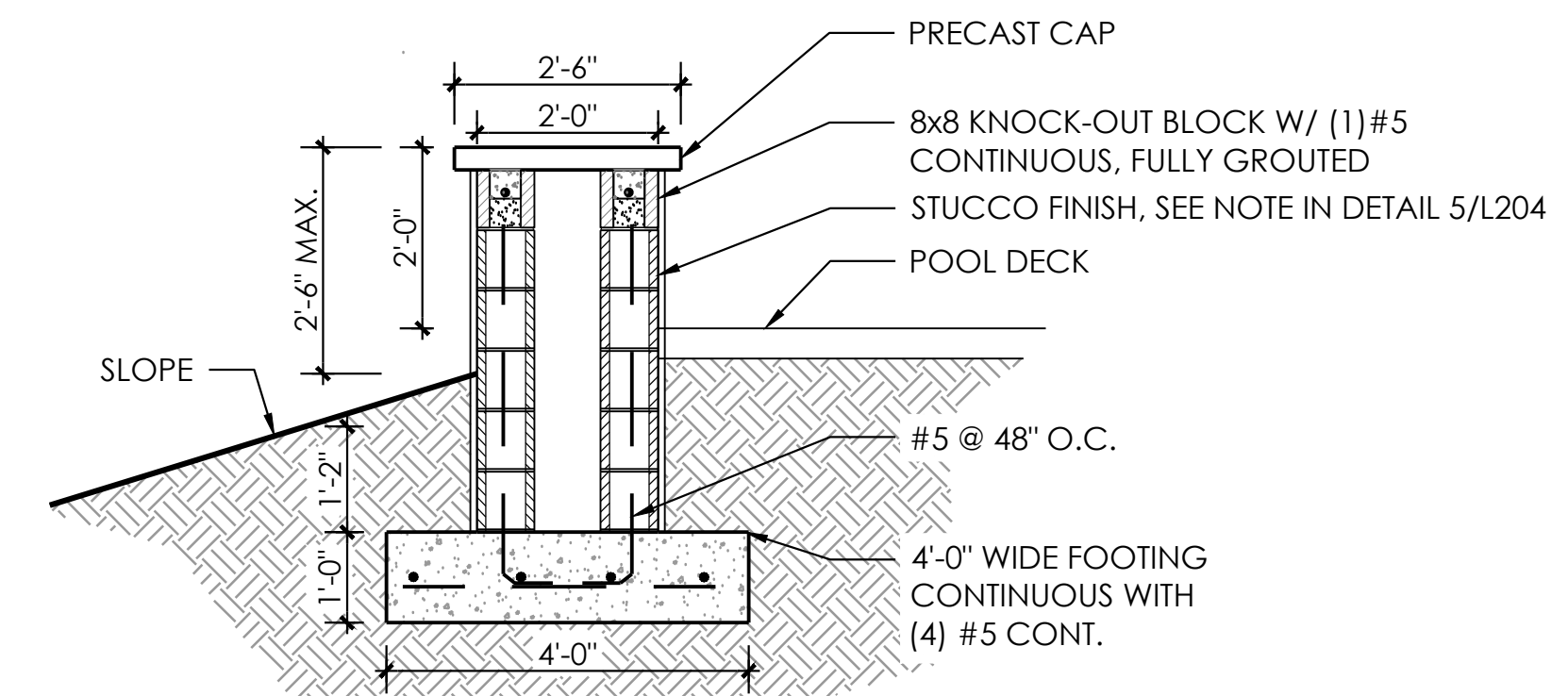
1 ARBOR POST SECTION  
L204 SCALE: 1/2" = 1'-0"



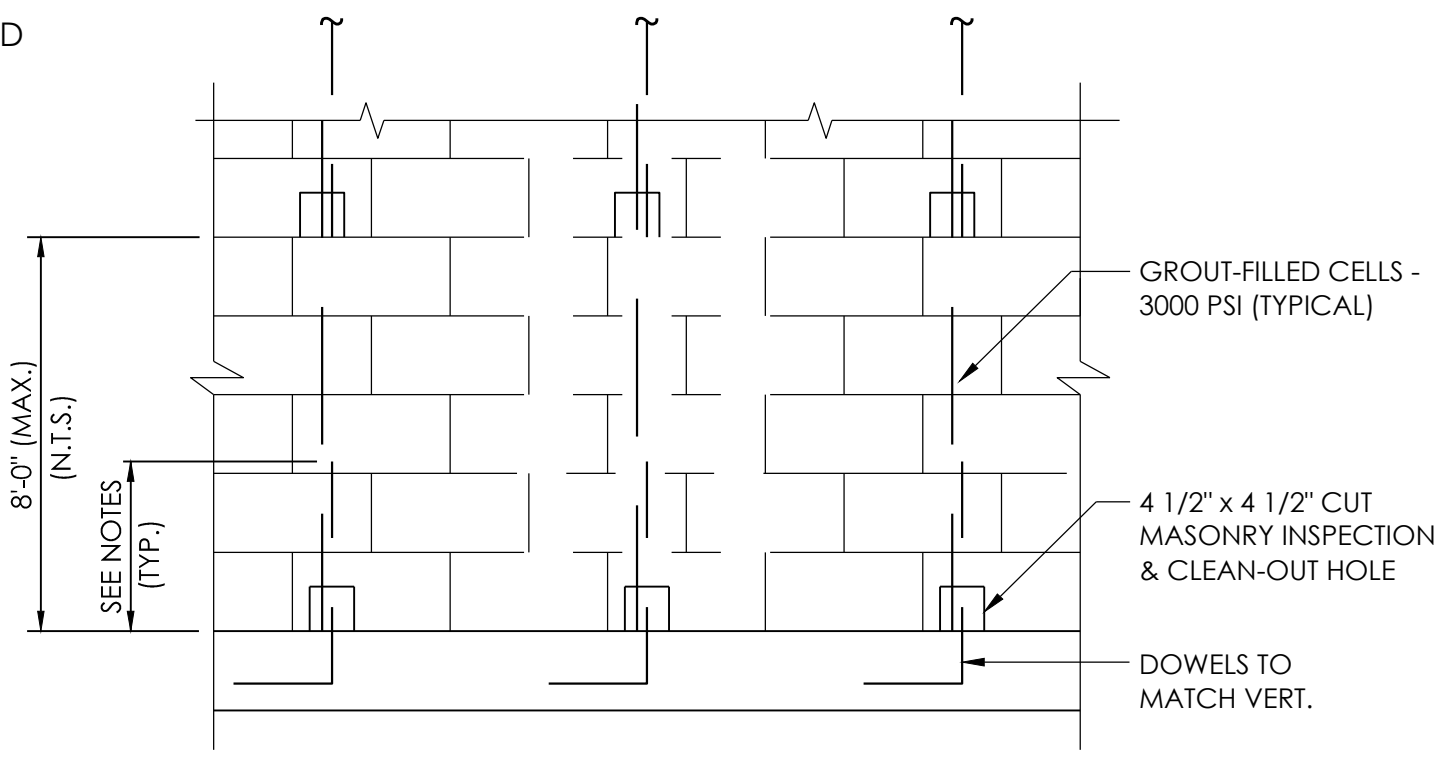
2 TOP CORNER SECTION  
L204 SCALE: 1" = 1'-0"



3 TOP ELEVATION  
L204 SCALE: 1/2" = 1'-0"



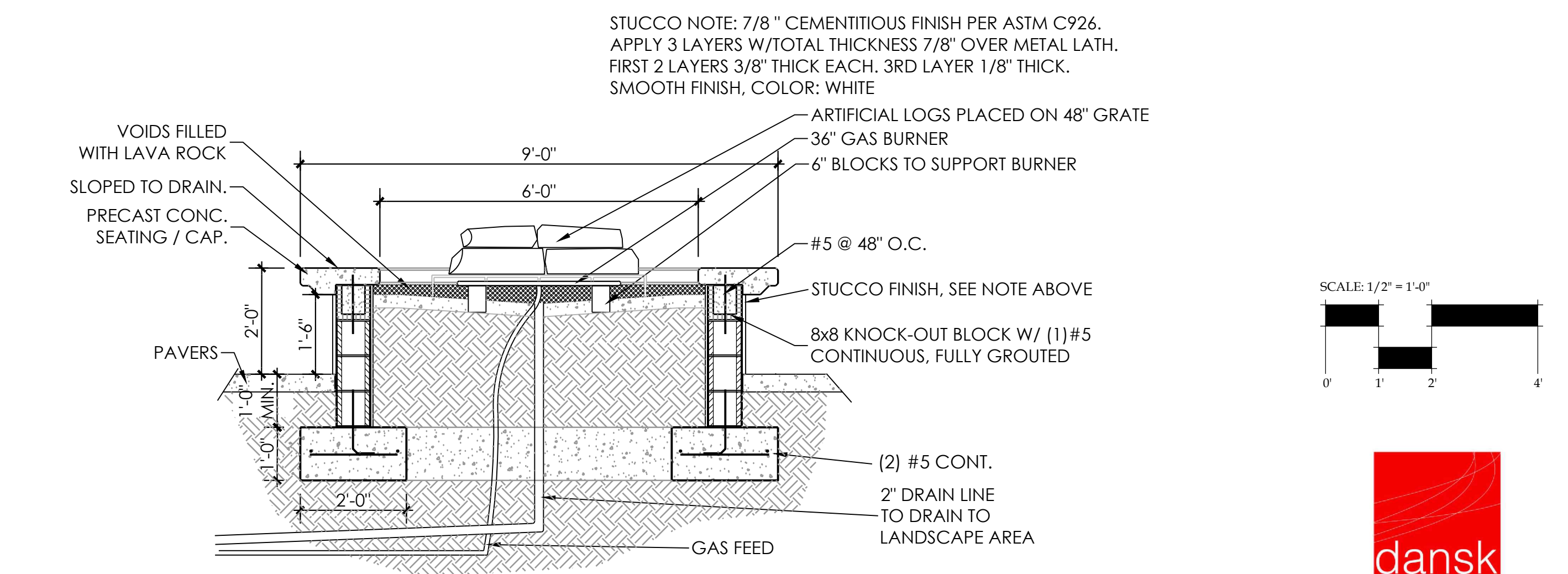
4 SEAT WALL SECTION  
L204 SCALE: 1/2" = 1'-0"



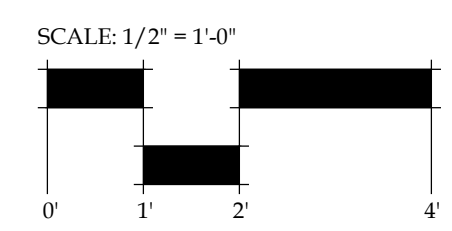
TYPICAL MASONRY FILLED CELL DETAIL

MASONRY WALL NOTES:

- WALL SEGMENTS SHALL BE REINFORCED WITH 9 GA. GALVANIZED LATERAL REINFORCING @ 16" O.C. HORIZ. EXTEND REINFORCING 6" INTO POURED ELEMENTS AND AROUND ENCASED STEEL.
- ALL MASONRY REINFORCED CELLS SHALL BE FILLED WITH 3000 PSI GROUT MIX.



5 FIRE PIT SECTION  
L204 SCALE: 1/2" = 1'-0"



1673 LAKE BALDWIN LANE  
ORLANDO FL 32814  
LIC EB28029



BONNETT design group, llc  
landscape architecture  
community planning  
FL LC 26000341

151 Circle Drive  
Maitland, FL 32751  
407.622.1588 voice  
407.358.5363 fax

Arbors at Wiregrass  
Landscape Architecture  
Lennar Homes, LLC  
PASCO COUNTY, FLORIDA  
STRUCTURAL DESIGN PLAN

DATE: October 16, 2014  
DRAWN BY: LAE/TWB  
CHECKED BY: BM  
JOB NUMBER: 2014.131  
FILE NAME:  
2014.131\_LEN WIREGRASS 1 IS BASE

REVISIONS:



L204

DRAWING: L204.DWG, 10/21/2014, 10:56:56 AM, C:\ASST\PROJECTS\ARBORS AT WIREGRASS\DESIGN\2014.131\_LEN WIREGRASS 1 IS BASE.DWG

© 2014 BONNETT DESIGN GROUP, LLC. ALL RIGHTS RESERVED. DESIGNER HEREBY EXPRESSLY RESERVES HIS COPYRIGHT AND OTHER PROPERTY RIGHTS IN THESE PLANS. THESE PLANS AND DRAWINGS ARE NOT TO BE REPRODUCED, CHANGED OR COPIED IN ANY FORM OR MANNER WHATSOEVER WITHOUT FIRST OBTAINING THE EXPRESS WRITTEN PERMISSION AND CONSENT OF BONNETT DESIGN GROUP, LLC NOR ARE THEY TO BE ASSIGNED TO ANY PARTY WITHOUT FIRST OBTAINING SAID WRITTEN PERMISSION AND CONSENT.

SHARNE MADSEN FL #56863